A large, stylized Maori koru pattern in shades of teal and orange, set against a dark blue background with a starry night sky. The pattern flows from the bottom left towards the top right.

Mā te whakakotahi i ō tatou
mātauranga ka hāpaitia ngā
ākonga katoa

Bringing together our
understandings to empower
all learners



Introduction

This mahi aims to:

- Build a shared focus and vision for research, evaluation, development in the education sector,
- Improve coordination across agencies,
- Increase their impact on policy priorities and resourcing decisions, and education practice across the sector




Leading to improved outcomes for our ākonga and whānau.



Leading to improved outcomes for our priority learners



We want researchers, educators, school leaders, ākonga and whānau, and funders to be part of a 10 year strategy.

A young boy with short dark hair is smiling broadly at the camera. He is wearing a maroon jacket over a grey hoodie. The background is a schoolyard with blue lockers and a building. A large blue circle with white text is overlaid on the left side of the image. At the bottom left, there are decorative wave patterns in green and yellow.

**Why are we
doing this
mahi?**

To give effect to Tiriti o Waitangi principles and recognise all partners at the table.

To hear your views on what a strategy should do (objectives).

To develop a unified and cohesive strategy across the education sector.

To hear your views on key priorities and challenges.

To increase the visibility and alignment with the wider national Research Science and Innovation (RSI) strategy.

To ensure funding is commensurate with the role and significance of education to national RSI priorities.

To understand how a strategy could meet your needs.



Our Engagement Kaupapa

- Recognise all Te Tiriti o Waitangi partners at the table,
- Engage early. Be inclusive. Think broadly,
- Be aware and understand the different requirements of iwi and hapū entities,
- Follow up quickly, so contributors' voices are valued and statements checked.

A photograph of two young women in a classroom or computer lab. The woman in the foreground is wearing a blue and purple plaid hoodie and has her hair in a bun. The woman behind her is wearing a denim jacket. They are both looking towards the right side of the frame. In the background, there are computer monitors and other students. A large blue circle with a white quote mark is overlaid on the left side of the image, containing the text "What we have been told so far...".

**What we
have been
told so far...**



A Strategy Should...

- Be Te Tiriti o Waitangi led and contribute more effectively to meeting the goals Māori have for educational success, including for Māori medium.
- Support and enable the research community to provide evidence for education policy and practices to best meet the aspirations and objectives of our diverse communities.
- Meet national priorities such as those in the NELP, TES and Pacific Education Plan.
- Work with Research, Science and Innovation strategy goals, by increasing the overall profile, funding and visibility of ERED.
- Increase the coordination and coherence of ERED nationally and between core agencies MOE, ERO and NZCER to enable greater access, dissemination and usefulness of ERED.

The Idea of a Strategy

What do you think the benefits are of developing a strategy for ERED?

What should it do?

How would the strategy be governed?

How could this mahi have the most impact?

What are your big challenges?

A photograph of two young women walking outdoors on a sunny day. The woman on the left has blonde hair and is wearing a blue and white striped shirt with a colorful beaded necklace. The woman on the right has dark hair and is wearing a light blue striped shirt and a grey plaid skirt. They are both smiling and looking at each other. A large blue circle with a white outline is overlaid on the left side of the image, containing the text. In the bottom left corner, there are decorative green and orange swirls. The background is a blurred green park with trees and a path.

**What do you
think are the
priorities?**

Some suggested examples

**Māori achieving
education
success as
Māori**

Wellbeing

**Early
learning**

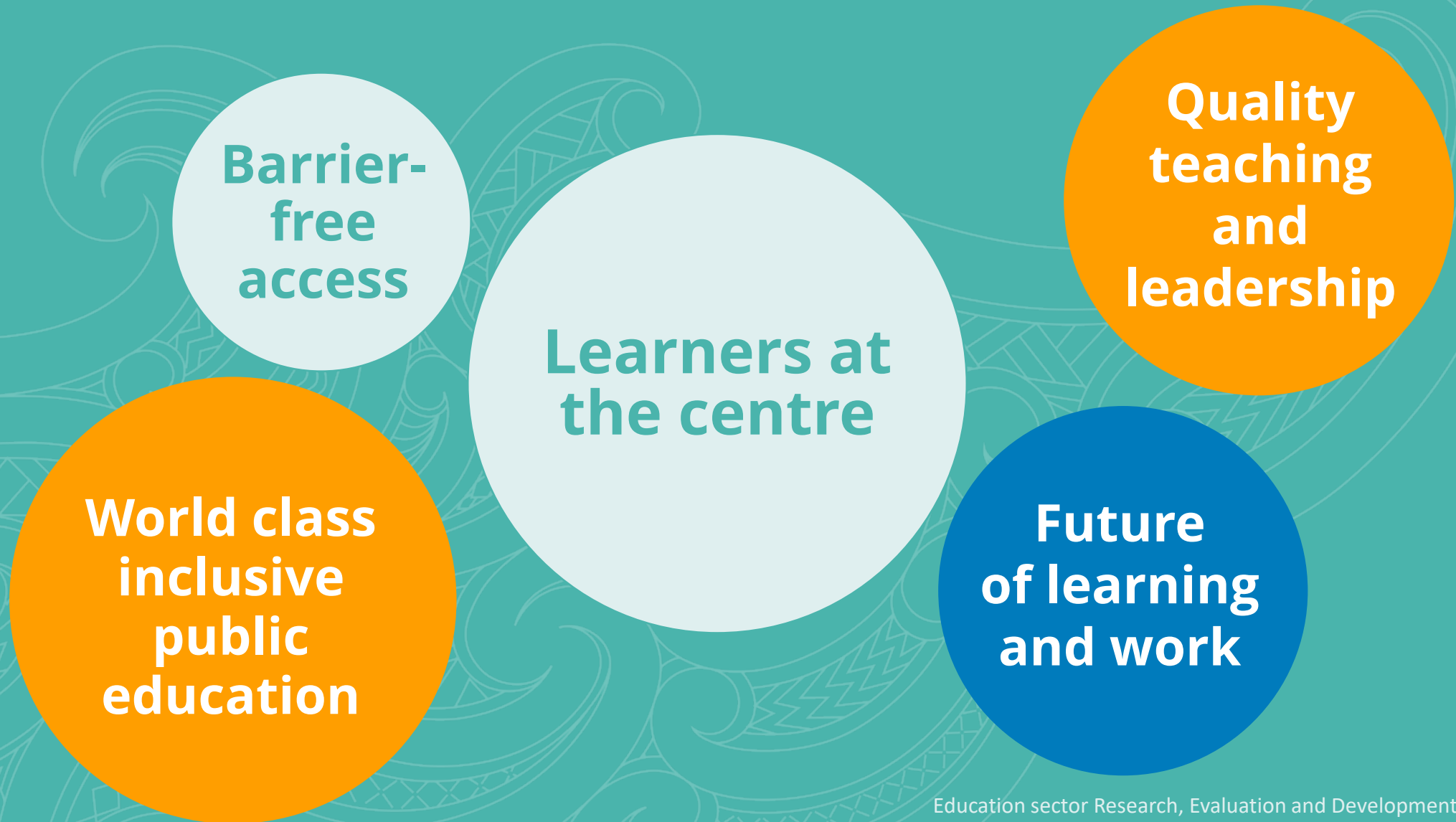
**Quality
teaching
and
leadership**

**Equitable
outcomes
for Pacific
learners**

**Future
of learning
and work**

**Learning
support**

The current National Education and Learning Priorities (NELP) and Tertiary Education Sector (TES) objectives



The current National Education and Learning Priorities (NELP) and Tertiary Education Sector (TES) objectives


'Great education opportunities are within reach for every learner'

'Learners with their whānau are at the centre of education'

'Quality teaching and leadership make the difference for learners and their whanau'

'New Zealand Education is trusted and sustainable'

'Learning that is relevant to the lives of New Zealanders today and throughout their lives'



Possible Guiding Kaupapa

Te Tiriti o Waitangi



Reflecting the rights of Māori as the indigenous people of New Zealand and the reality that Aotearoa New Zealand is the only place where ERED of importance to Māori can occur and which reflects Te Ao Māori.

Rigorous



The reliability and usefulness of ERED depends on confidence in the findings which draws on criteria such as integrity, transparency, replicability.

Ethical



In conduct and use, including meeting standards such as those relating to consent, privacy, data sovereignty.

Valuable



Is undertaken in such a way as to yield the best possible benefit from the resources that are available.

Contributes to evidence-informed decision-making



Adds to our having evidence to make good decisions.



Proposed Timetable - 2022	March	April	May	June	July
Peak body engagement					
Online Collaboration Site					
Drafting Strategy					
Consult Ministers					
Engage on Draft Strategy					
Finalise & publish **					
Present to Ministers					
Launch (DRAFT)					

*** final dates are subject to availability of stakeholders at this time*

A large, stylized Maori koru pattern in shades of blue, green, and yellow, set against a dark blue starry night sky background.

Tēnā koutou

Thank You

He Patai?

Any questions?

A small, light blue wavy line graphic.